



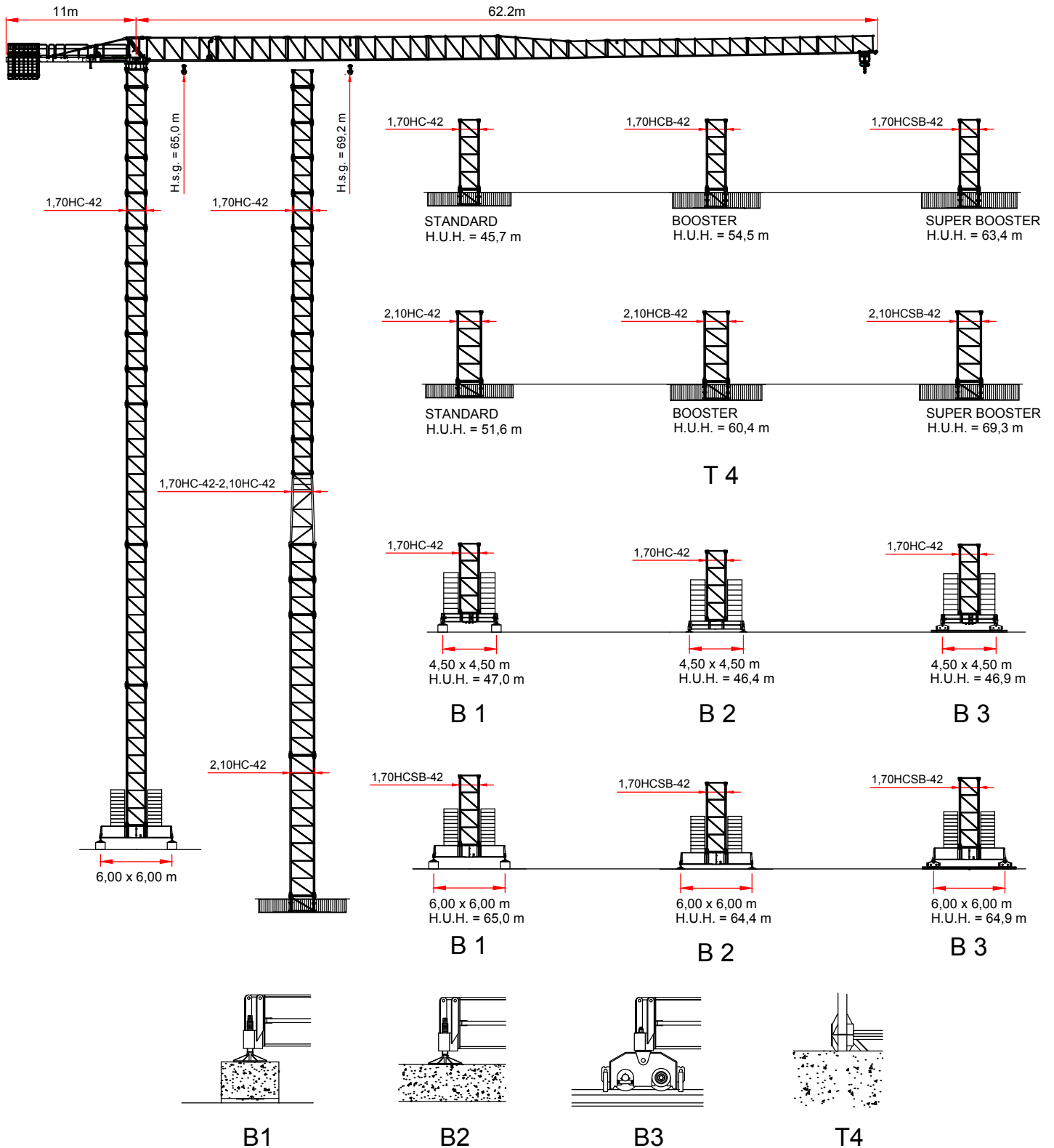
***GRT 6015*** *UltraLift*

***10t-Eco***

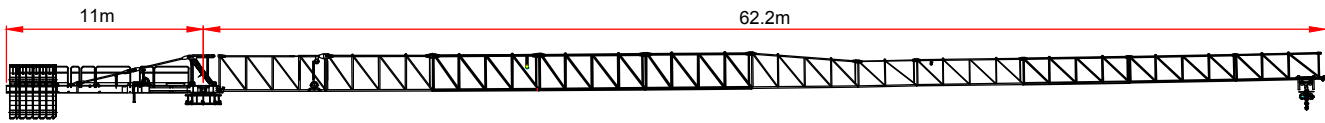
**EN 14439-FEM 1001- C25 / D25-A4**

TEKNIK KATALOG  
TECHNICAL DATASHEET  
SCHEDA TECNICA  
FICHE TECHNIQUE  
TECHNISCHE SPEZIFIKATIONEN

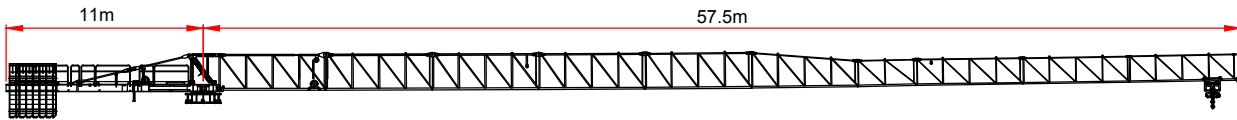
Gergisiz Kule Vinç - Gru senza cuspidate - Flat Top Crane - Grues sans poinçon - Kran ohne turmspitze



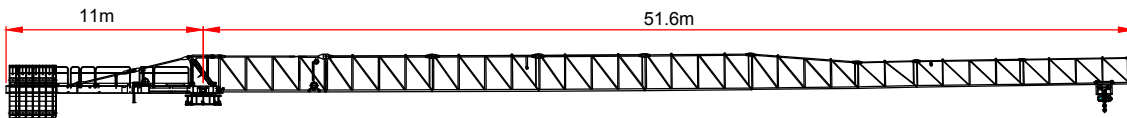
# YÜK DİYAGRAMI - DIAGRAMMI DI PORTATA - LOAD CHART - DIAGRAMME DE CHARGE UTILE - BELASTBERKEITSDIAGRAMM



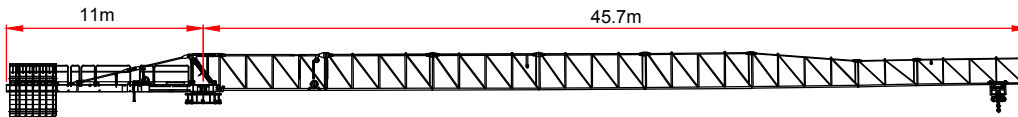
5 t → 24.1m	JIB (m)	<b>26</b>	<b>28</b>	<b>32</b>	<b>35</b>	<b>38</b>	<b>44</b>	<b>50</b>	<b>56</b>	<b>60</b>
	t	4.3	4.0	3.4	3.1	2.8	2.3	1.9	1.7	1.5
10 t → 11.0m	t	4.4	4.0	3.4	3.0	2.7	2.2	1.8	1.6	1.4



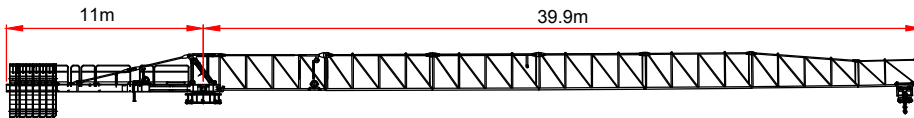
5 t → 25.9m	JIB (m)	<b>26</b>	<b>28</b>	<b>32</b>	<b>35</b>	<b>38</b>	<b>44</b>	<b>50</b>	<b>56</b>
	t	5.0	4.4	3.9	3.5	3.1	2.6	2.2	1.9
10 t → 12.0m	t	4.9	4.5	3.8	3.4	3.0	2.5	2.1	1.8



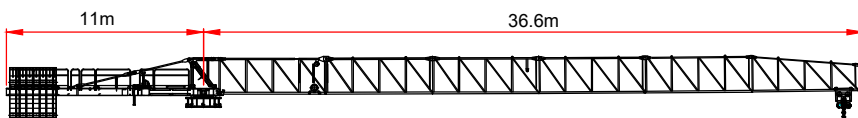
5 t → 28.0m	JIB (m)	<b>26</b>	<b>28</b>	<b>32</b>	<b>35</b>	<b>38</b>	<b>44</b>	<b>50</b>
	t	5.0	5.0	4.1	3.7	3.4	2.8	2.4
10 t → 13.1m	t	5.3	4.8	4.1	3.6	3.3	2.7	2.3



5 t → 28.0m	JIB (m)	<b>26</b>	<b>28</b>	<b>32</b>	<b>35</b>	<b>38</b>	<b>44</b>
	t	5.0	5.0	4.2	3.8	3.4	2.9
10 t → 13.1m	t	5.3	4.9	4.1	3.7	3.3	2.8



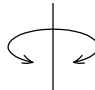
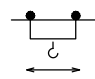
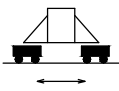
5 t → 28.2m	JIB (m)	<b>26</b>	<b>28</b>	<b>32</b>	<b>35</b>	<b>38</b>
	t	5.0	5.0	4.2	3.8	3.4
10 t → 13.1m	t	5.3	4.9	4.1	3.7	3.3

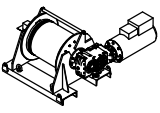






5 t → 28.2m	JIB (m)	<b>26</b>	<b>28</b>	<b>32</b>	<b>35</b>
	t	5.0	5.0	4.2	3.8
10 t → 13.1m	t	5.3	4.9	4.1	3.7

# TEMEL ÖZELLİKLER - CARATTERISTICHE AZIONAMENTI PRINCIPALI - MAIN DRIVE FEATURES

## CARACTÉRISTIQUE ACTIONNEMENTS PRINCIPAUX - HAUPTBEDIENUNGSEIGENSCHAFTEN

		Hız - Velocità - Speed - Vitesse - Geschwindigkeit	Güç - Potenza - Power - Puissance - Leistung
Dönüş Rotazione Slewing Orientation Schwenken		0 → 0,67 r.p.m.	2 x 65 Nm
Şaryo Carrello Trolley Chariot Katzfahren		12 / 35 / 70 m/min.	5,5 KW
Yürüyüş Traslazione Rail Translation Kranfahren		16 m/min.	2 x 4 kW

Tip Type Tipo Type Type	Güç - Power - Potenza Puissance - Leistung		Halat - Rope - Fune Cable - Seil	
	hp - CV PS - ch	kW	m	
 50-VF1035	50	37	500	
Katman - Layer - Strati Couches - Lagen	N. 9			
Vites - Step - Marcia Vitesse - Gang	kg	m/min	kg	m/min
1	5000	7,2	10000	3,6
2	5000	36,2	10000	18,1
3	2500	57,6	5000	28,8
4	1500	79,2	3000	39,6
Maksimum Yükseklik - Maximum height - Massima altezza - Hauteur maximale - Maximale Höhe	 163 m	 80 m		





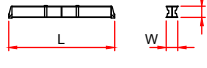
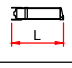
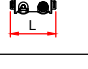

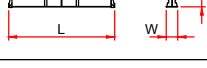
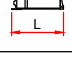
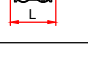
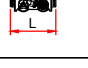
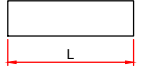
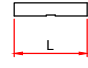
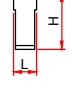
8 x 40' H.U.H =50mt	9 x 40' H.U.H =60mt	 Highcube	7 x H.U.H =50mt	8 x H.U.H =60mt	 L:13.60 W:2.45 H:3.00/2.70
---------------------------------	---------------------------------	-------------------------------------------------------------------------------------------------	--------------------------	--------------------------	--------------------------------------------------------------------------------------------------------------------

TOPLAM GÜÇ TOTAL INSTALLED POWER FORZA MOTRICE TOTALE PUISSANCE TOTALE DES MOTEURS GESAMT-MOTORENLEISTUNG	400 V - 50 Hz 58 kW
-----------------------------------------------------------------------------------------------------------------------	------------------------

Sevkiyat Listesi - Distinta di Carico - Packing List - Liste de Colisage - Kolli-Liste

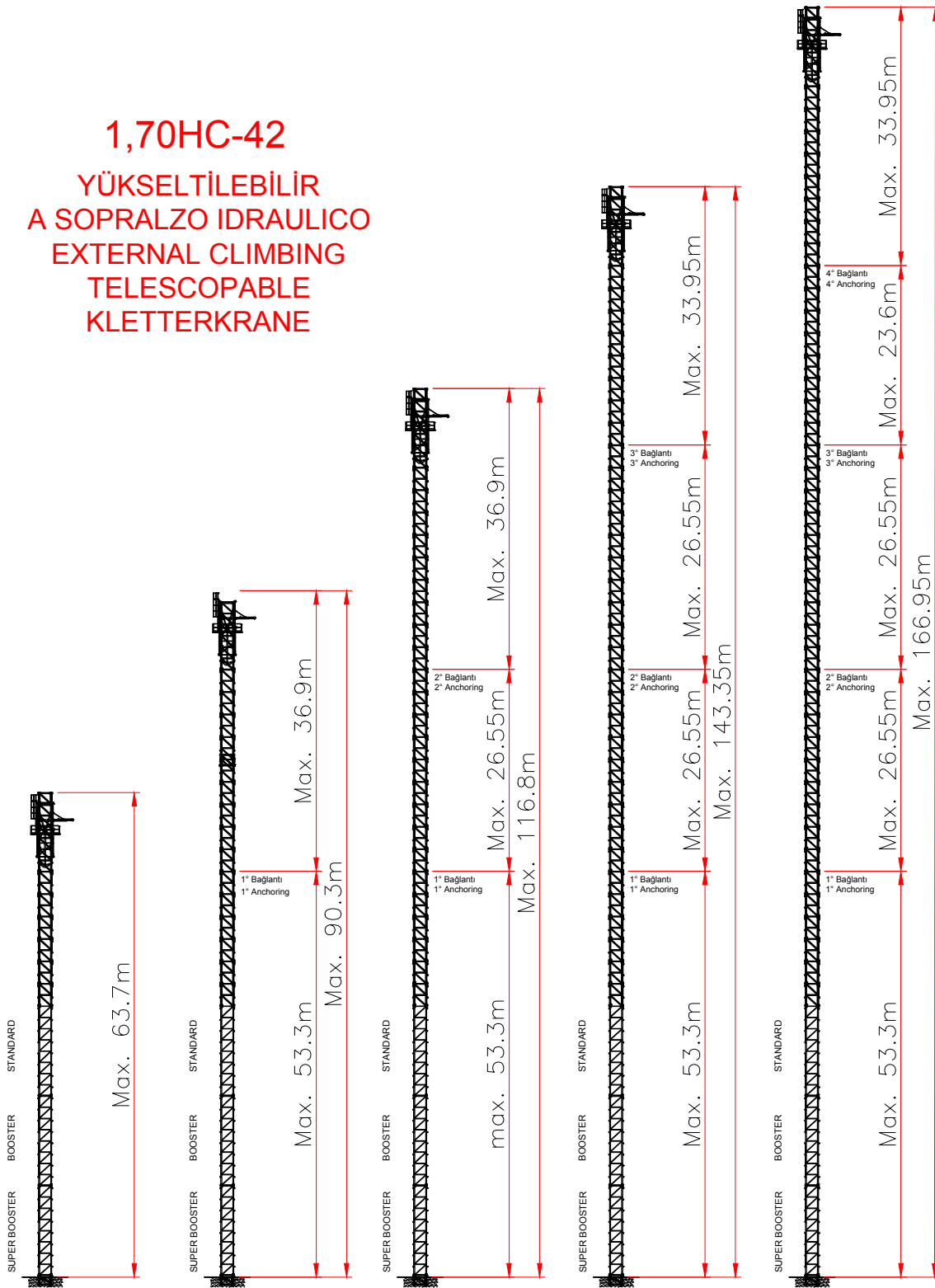
No. Pos. Item	Parça Pezzi Pieces	Açıklama Denominazione Description	Çizim Schizzo Sketch	Boyutlar Dimensions			Ağırlık Weight (Kg)	
				L	W	H	Unit.	Total.
1	1	Bom Elemento di freccia Jib element Elément de flèche Ausleger	N°0	6.090	1.370	2.150	-	2020
	1		N°1	6.130	1.150	2.060	-	960
	1		N°2	6.155	1.150	2.060	-	916
	1		N°3	6.155	1.150	2.060	-	790
	1		N°4	6.155	1.150	2.060	-	566
	1		N°5	6.060	1.150	2.030	-	512
	1		N°5b	3.360	1.150	1.500	-	274
	1		N°6	6.060	1.150	1.500	-	380
	1		N°7	6.040	1.150	1.500	-	326
	1		N°8	6.005	1.150	1.500	-	300
	1		N°9	4.785	1.150	1.470	-	216
2	Bom Freccia Flèche Jib Ausleger		60 m 56 m 50 m 44 m 38 m 35 m	55.6 50.9 45.0 39.1 33.2 29.9	1.280 1.280 1.280 1.280 1.280 1.280	2.200 2.200 2.200 2.200 2.200 2.200	- - - - - -	5240 5024 4724 4398 4018 3744
3	1	Kule, Cuspide, A frame, Pointe, Turmspitze		1.65	1.21	1.73	-	695
4	1	Kuyruk tablası, kanca motoru elektrik panosu vs. Controfreccia girevole, argano di sollev. quadro elettrico etc. Counterjib-turtable, hoisting winch, electrical box etc.		5.085	1.95	2.06	-	5905
3+4	1	Contreflèche tournante, treuil de levage, armoire électrique. Gegenausleger, Hubwinde, Drehwerk Schaltschrank.		5.085	1.7	2.65	-	6600
5	1	Kuyruk. Elemento controfreccia esterno. External counterjib. Contreflèche extérieure. Externes gegenausleger.		7.215	1.435	1.470	-	2050
6		Kabin Cabina e ballatoio Cabin with access platform Cabine avec ensemble mat cabine Kabine		2.600	2.100	2.100	650	836
7	-	Mast Elemento di torre Tower element Elément de Mât Turmstück	Standard	11.8	1.87	1.87	*	4172
	Booster		11.8	1.87	1.87	*	5430	
	Super Booster		11.8	1.87	1.87	*	6345	
8	-			5.9	1.87	1.87	*	2250
9	-			2.95	1.87	1.87	*	1365

Sevkiyat Listesi - Distinta di Carico - Packing List - Liste de Colisage - Kolli-Liste

No. Pos. Item	Parça Pezzi Pieces	Açıklama Denominazione Description	Çizim Schizzo Sketch	Boyutlar Dimensions			Ağırlık Weight (Kg)		
				L	W	H	Unit.	Total.	
10	-	Ankraj Tronchetto di fondazione Expendable foundation element Elément a sceller Fundamentanker  Canşın Mast Telaio di spinta Jacking element Hubelement		1.325	1.94	1.94	*	750	
10	-		Standard 	1.525	1.94	1.94	*	750	
10	-		Booster 	1.525	1.94	1.94	*	750	
11	-		Super Booster 	1.540	1,95	1.95	*	980	
12	1	ŞASE - UZUN KOL TRAVE DI BASE PRINCIPALE BASE MAIN BEAM POUTRE DE CHASSIS DE BASE		4,5x4,5mt	6,530	0,710	0,760	*	2120
13	1	ŞASE - KISA KOL SEMI-TRAVE DI BASE HALF BASE BEAM SEMIPOUTRE DE CHASSIS DE BASE		4,5x4,5mt	3,200	0,590	0,770	1030	2060
14	2	YÜRÜYÜŞ TAKIMI BILANCINO DI TRASLAZ. FOLLE DRIVEN BOIGE BOGGIE FOU		1.16	0.25	0.503	455	960	
15	2	YÜRÜYÜŞ TAKIMI - MOTORLU BILANCINO DI TRASLAZ. MOTORIZ. BOGGIE MOTORISEE DRIVING BOIGE		1.16	0.59	0.503	680	1360	
12	1	ŞASE - UZUN KOL TRAVE DI BASE PRINCIPALE BASE MAIN BEAM POUTRE DE CHASSIS DE BASE		6,0x6,0mt	8,640	0,780	1,07	*	4750
13	1	ŞASE - KISA KOL SEMI-TRAVE DI BASE HALF BASE BEAM SEMIPOUTRE DE CHASSIS DE BASE		6,0x6,0mt	4,320	0,680	1,07	2370	4740
14	2	YÜRÜYÜŞ TAKIMI BILANCINO DI TRASLAZ. FOLLE DRIVEN BOIGE BOGGIE FOU		1320	0,220	0,540	0,600	1200	
15	2	YÜRÜYÜŞ TAKIMI - MOTORLU BILANCINO DI TRASLAZ. MOTORIZ. BOGGIE MOTORISEE DRIVING BOIGE		1430	0,490	0,540	0,760	1520	
16	34	Şase taşı Blocco di zavorra Base ballast block Lest de base Grundballastblöcken (Z 295)		3.600	0.300	1.200	2950	100300	
17	4	Destek bloğu Blocco di appoggio Concrete pad Şabot en béton Betonfuss (BA 2)		3.600	0.800	0.600	3925	15700	
18	2 6	Kuyruk taşı Blocchi di contrappeso Counterweight block Contre-poids Gegengewichtsbloecke		A 125 B 250	A 125 B 250	3.000 1.200	0.185 1.200	1250 2500	2500 15000

## 1,70HC-42

YÜKSELTİLEBİLİR  
A SOPRALZO IDRAULICO  
EXTERNAL CLIMBING  
TELESCOPABLE  
KLETTERKRANE



Farklı Dizilimler Mümkündür  
Altre Configurazioni Disponibili  
Other Configuration Available  
Autres configurations Disponibles  
Andere Konfigurationen Verfügbar

# BİLGİ VE TALEPLERİNİZ İÇİN

**FNS Makina Yapı ve İnşaat San. ve Tic. Ltd. Şti.**

Oruçreis mah. Tekstilkent Cad. Tekstilkent Sitesi A11 Blok

No:209 Esenler / İstanbul

<b>İletişim</b>	+90 (212) 438 47 00
<b>Cep</b>	+90 531 524 50 20
<b>E-mail</b>	info@fnsmakina.com.tr



Özellikler ve teknik veriler katalogdakinden farklılık gösterebilir.

Dati illustrativi non impegnativi con riserva di modifica senza preavviso

Specifications and data not binding subject to modification without notice

Angaben und Beschreib ungunverbindlich andreungen vorbehalten ohne weitere mitteilung

Données techniques seulement indicatives modifications réservées sans préavis.